

Arriving in the evening at Alalit, between the black bog, the bridge, and the town proper:



View of the ancient bridge that leads away from Alalit to the Peninsula proper, across the estuary of the toxic river that leads into Horse Bay beyond, as seen from the base of the cliffs below Alalit, near the hidden entrance to the Holy Temple of Cam. A pod of obbs takes flight from the bridge.

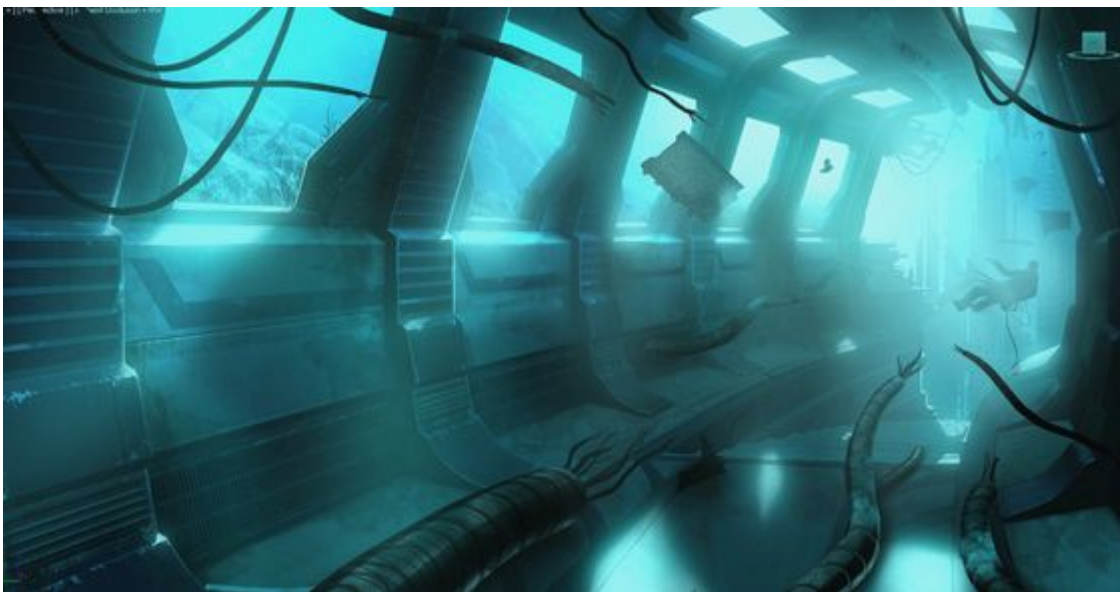


First room inside of the Holy Temple of Cam:



Later, across Horse Bay from Alalit, they investigated an aquatic resarch facility near Bay Village.

Voice of Cam 2, found floating in a flooded corridor:



From:

<https://wiki.wishray.com/> - Wishray Wiki

Permanent link:

https://wiki.wishray.com/doku.php?id=cmm:alalit_sights&rev=1620774068

Last update: **2021/05/11 16:01**

