

# Horse Bay

And environs.

## Alalit

The largest inhabitation on the peninsula (and it's barely on the peninsula), Alalit is the center of the Camite religion.

## Cam's "Temple"

This underwater base is accessible only by means of the last remaining "bubble transport" system near some ruins on the outskirts of Alalit. When approaching this place, the Camites make a complete circumnavigation of Alalit so as to throw off those who might follow them to the transport.

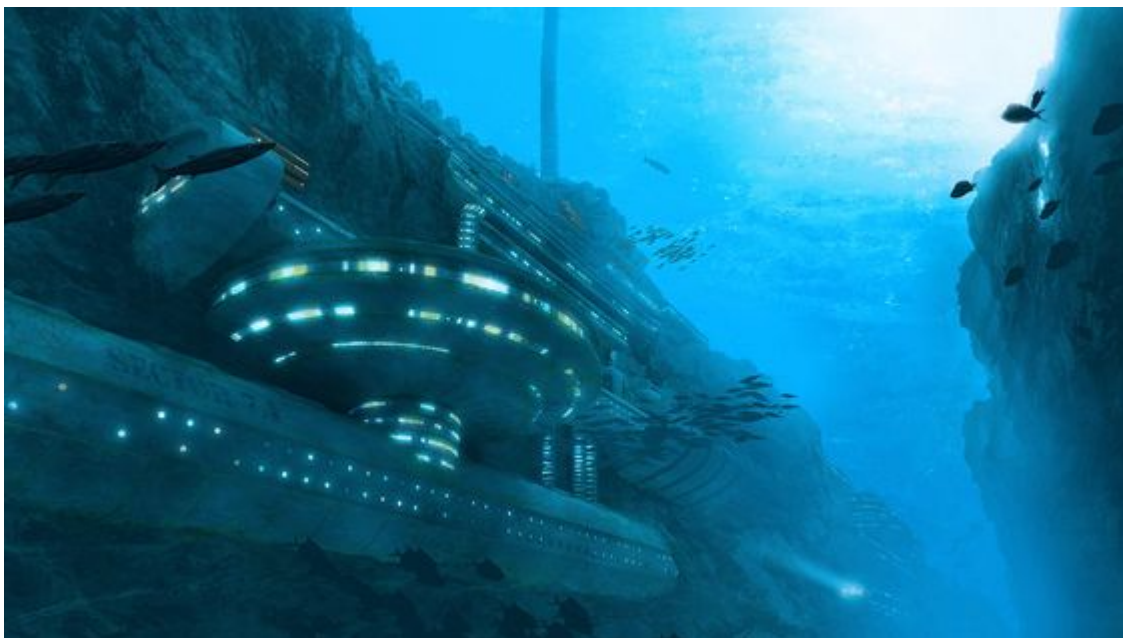
Ruins near Alalit:



Bubble Transport Station:



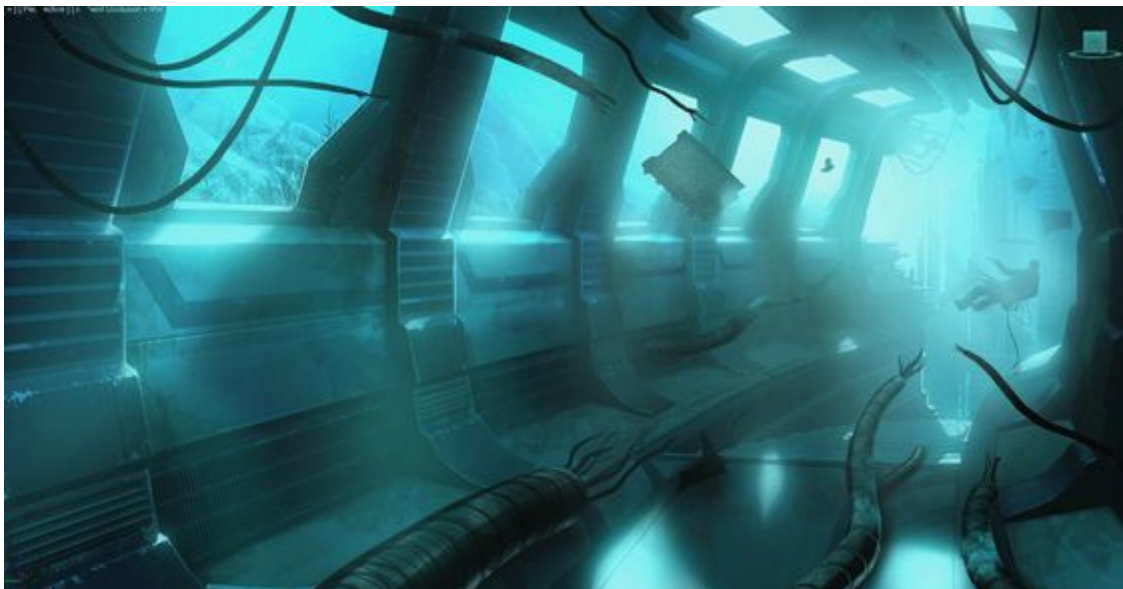
Cam's temple:



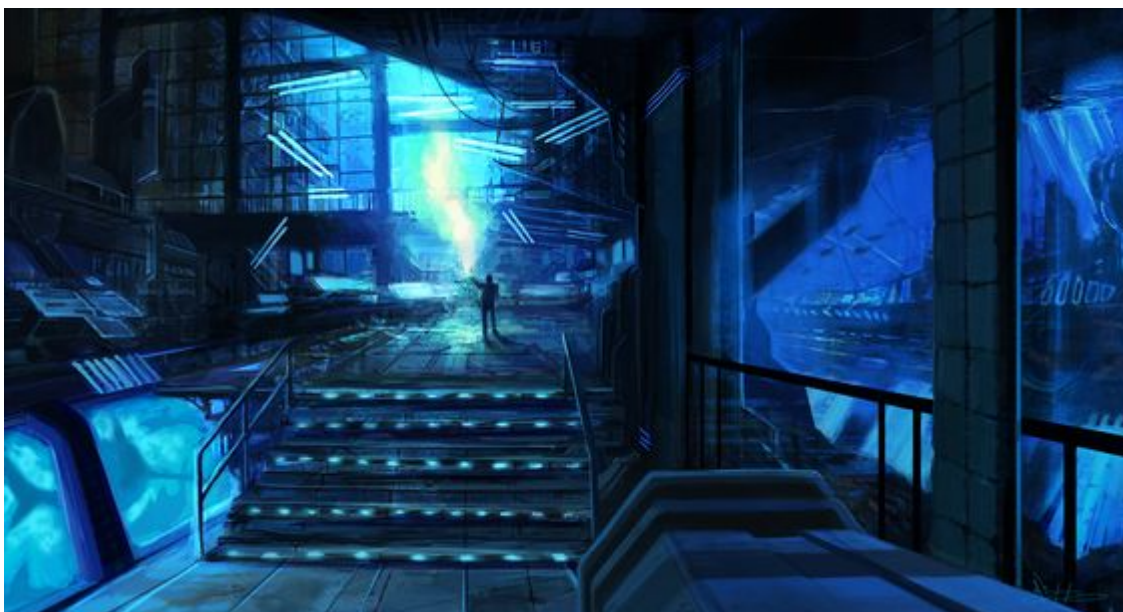
Ruined portions:



Ruined Interior:



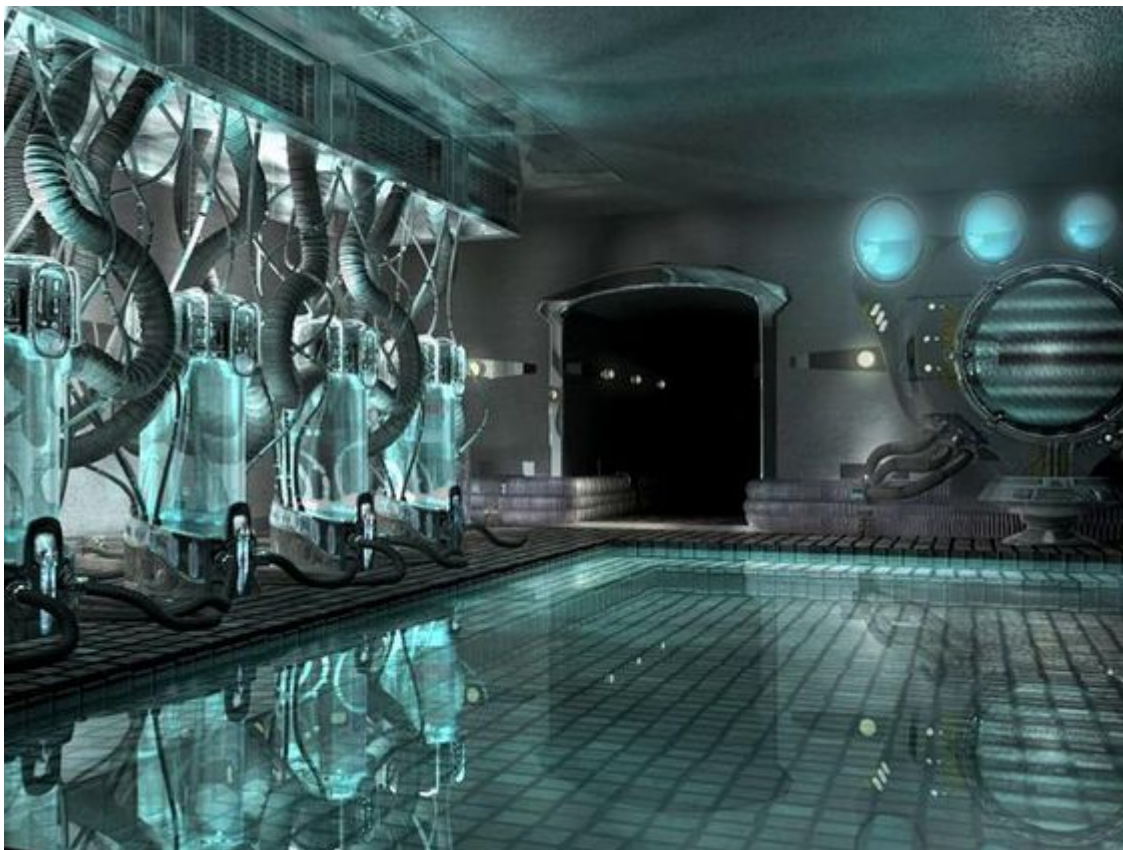
Temple interior:



Launch Bay:



Laboratory:



Holy of holies:



From:  
<https://wiki.wishray.com/> - **Wishray Wiki**

Permanent link:  
[https://wiki.wishray.com/doku.php?id=cmm:horse\\_bay](https://wiki.wishray.com/doku.php?id=cmm:horse_bay)

Last update: **2017/09/14 21:03**

